

ARTICLE

DOI: 10.1038/s41467-017-00162-x

OPEN

# Structure of spin excitations in heavily electron-doped $\text{Li}_{0.8}\text{Fe}_{0.2}\text{ODFeSe}$ superconductors

Bingying Pan<sup>1</sup>, Yao Shen<sup>1</sup>, Die Hu<sup>1</sup>, Yu Feng<sup>1</sup>, J.T. Park<sup>2</sup>, A.D. Christianson<sup>3,4</sup>, Qisi Wang<sup>1</sup>, Yiqing Hao<sup>1</sup>, Hongliang Wo<sup>1</sup>, Zhiping Yin<sup>5</sup>, T.A. Maier<sup>6,7</sup> & Jun Zhao<sup>1,8</sup>

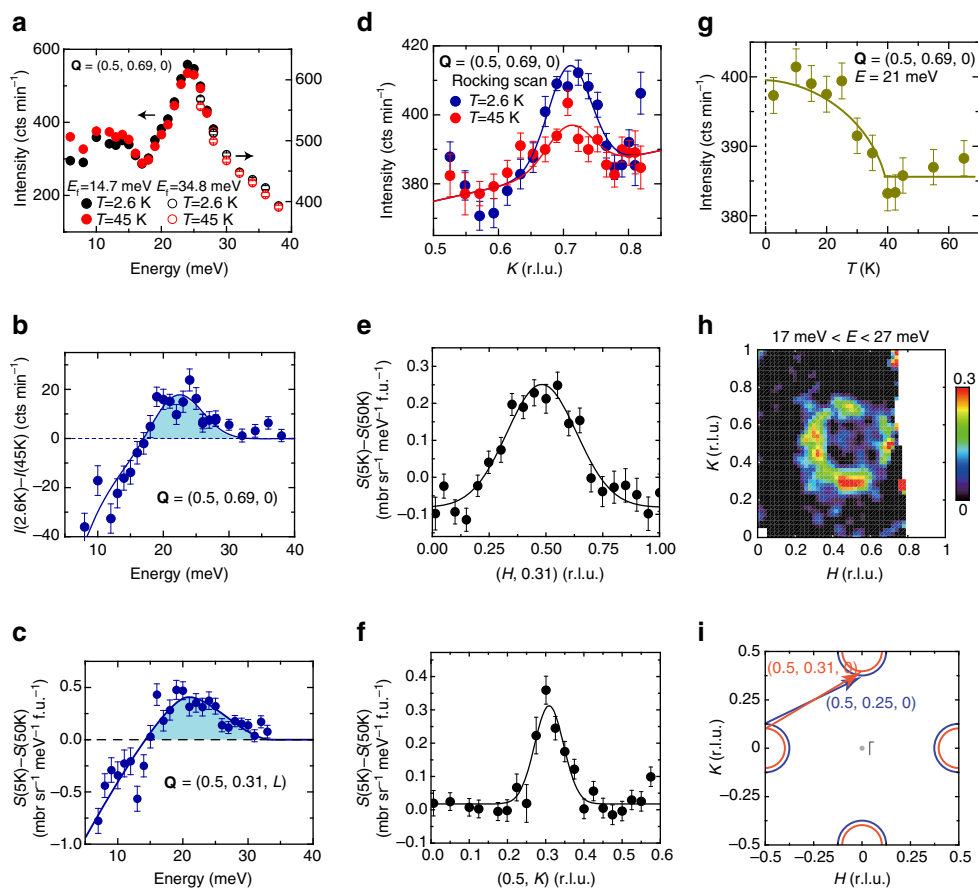
Heavily electron-doped iron-selenide high-transition-temperature (high- $T_c$ ) superconductors, which have no hole Fermi pockets, but have a notably high  $T_c$ , have challenged the prevailing  $s_{\pm}$  pairing scenario originally proposed for iron pnictides containing both electron and hole pockets. The microscopic mechanism underlying the enhanced superconductivity in heavily electron-doped iron-selenide remains unclear. Here, we used neutron scattering to study the spin excitations of the heavily electron-doped iron-selenide material  $\text{Li}_{0.8}\text{Fe}_{0.2}\text{ODFeSe}$  ( $T_c = 41$  K). Our data revealed nearly ring-shaped magnetic resonant excitations surrounding  $(\pi, \pi)$  at  $\sim 21$  meV. As the energy increased, the spin excitations assumed a diamond shape, and they dispersed outward until the energy reached  $\sim 60$  meV and then inward at higher energies. The observed energy-dependent momentum structure and twisted dispersion of spin excitations near  $(\pi, \pi)$  are analogous to those of hole-doped cuprates in several aspects, thus implying that such spin excitations are essential for the remarkably high  $T_c$  in these materials.

<sup>1</sup>State Key Laboratory of Surface Physics and Department of Physics, Fudan University, Shanghai 200433, China. <sup>2</sup>Heinz Maier-Leibnitz Zentrum (MLZ), Technische Universität München, Garching D-85748, Germany. <sup>3</sup>Quantum Condensed Matter Division, Oak Ridge National Laboratory, Oak Ridge, Tennessee 37831-6393, USA. <sup>4</sup>Department of Physics and Astronomy, University of Tennessee, Knoxville, Tennessee 37996, USA. <sup>5</sup>Department of Physics and Center for Advanced Quantum Studies, Beijing Normal University, Beijing 100875, China. <sup>6</sup>Computer Science and Mathematics Division and Center for Nanophase Materials Sciences, Oak Ridge National Laboratory, Oak Ridge, Tennessee 37831, USA. <sup>7</sup>Materials Science and Technology Division, Oak Ridge National Laboratory, Oak Ridge, Tennessee 37831, USA. <sup>8</sup>Collaborative Innovation Center of Advanced Microstructures, Nanjing 210093, China. Bingying Pan and Yao Shen contributed equally to this work. Correspondence and requests for materials should be addressed to J.Z. (email: [zhaoj@fudan.edu.cn](mailto:zhaoj@fudan.edu.cn))

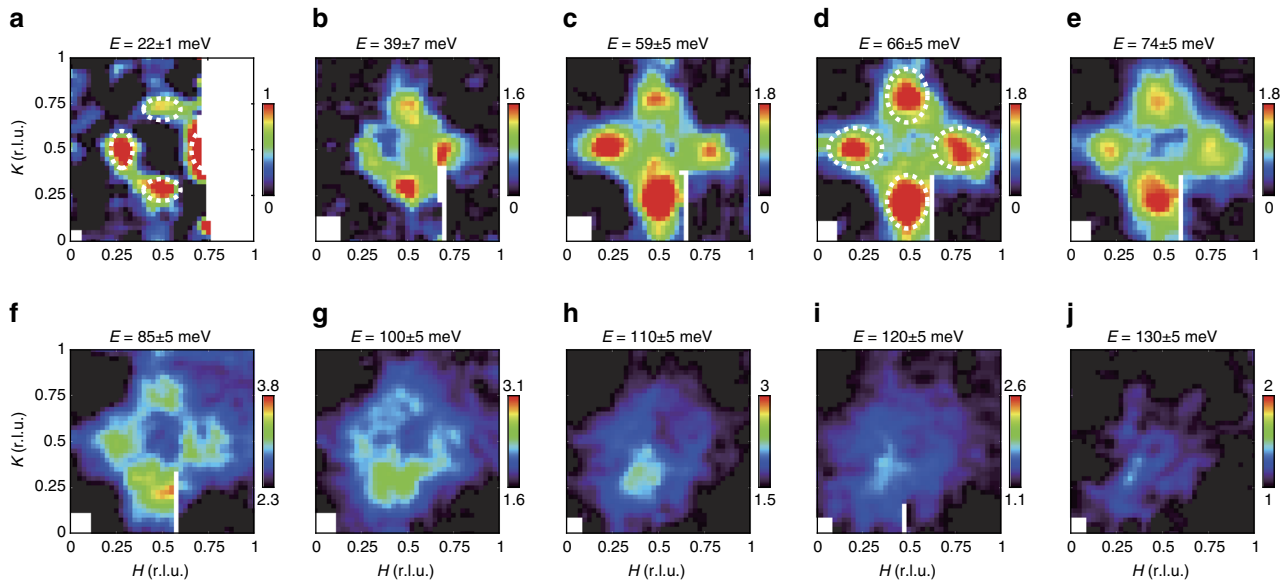
Quantitative knowledge of the energy and momentum dependence of the spin excitations of high-temperature superconductors is essential in establishing the mechanism underlying superconductivity. In iron-pnictide superconductors, it is widely believed that the electron pairing is mediated by the stripe spin fluctuations near the nesting wavevector  $(\pi, 0)$  between the hole pockets at the Brillouin zone center and the electron pockets at the zone edges (1-Fe unit cell), which typically leads to an  $s$ -wave pairing with a sign-reversed gap function ( $s_{\pm}$ )<sup>1</sup>. However, in the parent phase of iron selenide superconductors FeSe ( $T_c = 8.7$  K), in addition to the stripe spin fluctuations near  $(\pi, 0)$ , Néel spin fluctuations near  $(\pi, \pi)$  were observed over a wide energy range<sup>2</sup>. Moreover, the  $s_{\pm}$  pairing scenario is directly challenged by heavily electron-doped iron-selenides (HEDIS) because these superconductors contain only electron pockets, but not hole pockets<sup>3–10</sup>. In particular, the wavevector connecting the electron pockets is close to  $(\pi, \pi)$  rather than  $(\pi, 0)$  in HEDIS, and this raises noteworthy questions as to how the spin excitation and pairing symmetry evolve as the system is tuned into the heavily electron-doped regime in which superconductivity is surprisingly enhanced<sup>6, 11–13</sup>.

The pairing symmetry in HEDIS is currently under intense theoretical debate<sup>14–25</sup>. In experimental studies, scanning tunneling microscopy quasiparticle interference measurements suggested a sign-preserved  $s$ -wave superconducting gap function between electron pockets in single-layer FeSe/SrTiO<sub>3</sub> thin films<sup>26</sup>, whereas low-energy inelastic neutron scattering data revealed a magnetic resonant mode around  $(\pi, 0.5\pi)$  in  $A_x\text{Fe}_{2-y}\text{Se}_2$  ( $A = \text{K}, \text{Rb} \dots$ ), indicating a sign-reversed superconducting gap function<sup>27–29</sup>. However, the lack of phase-pure single-crystalline samples have rendered impractical the measurement of the momentum structure of spin excitations over a wider energy range throughout the entire Brillouin zone in any HEDIS superconductor. In addition, studies have argued that the coexisting  $\sqrt{5} \times \sqrt{5}$  iron vacancy ordered antiferromagnetic insulating phase in  $A_x\text{Fe}_{2-y}\text{Se}_2$  and the substrate of the single-layer FeSe/SrTiO<sub>3</sub> may influence superconductivity<sup>30, 31</sup>. As yet a complete picture of the spin excitations and the pairing symmetry of a pure bulk single-crystalline HEDIS material remain unclear.

The newly discovered HEDIS  $\text{Li}_{0.8}\text{Fe}_{0.2}\text{OHFeSe}$  ( $T_c = 41$  K) exhibits remarkably similar electronic and superconducting gap structures to those of single layer FeSe/SrTiO<sub>3</sub><sup>9, 10, 32, 33</sup>.



**Fig. 1** Magnetic resonant mode in  $\text{Li}_{0.8}\text{Fe}_{0.2}\text{OHFeSe}$  ( $T_c = 41$  K). **a** Energy dependence of spin excitations for  $\text{Li}_{0.8}\text{Fe}_{0.2}\text{OHFeSe}$  at  $\mathbf{Q} = (0.50, 0.69, 0)$  in the superconducting state ( $T = 2.6$  K) and normal state (45 K). The *solid* and *open* circles correspond to the data collected at final energies of  $E_f = 14.7$  and  $34.8$  meV, respectively. **b** Intensity difference between the superconducting state and normal state ( $S(2.6\text{ K}) - S(45\text{ K})$ ) at  $(0.50, 0.69, 0)$  measured on the PUMA thermal triple-axis spectrometer. The data collected at different  $E_f$  were normalized. **c** Intensity difference between the superconducting state and normal state ( $S(5\text{ K}) - S(50\text{ K})$ ) at  $(0.50, 0.31, L)$  measured on the ARCS time of flight spectrometer ( $0.5 \leq L \leq 4$ ). **d** Rocking scan near  $(0.50, 0.69, 0)$  at  $E = 21$  meV at  $T = 2.6$  K and 45 K. **e, f** Intensity difference between the superconducting state and normal state ( $S(5\text{ K}) - S(50\text{ K})$ ) along the  $(H, 0.31)$  and  $(0.50, K)$  directions. **g** Temperature dependence of the scattering at  $(0.50, 0.69, 0)$  and  $E = 21$  meV. **h** Intensity difference image ( $S(5\text{ K}) - S(50\text{ K})$ ) at  $E = 22 \pm 5$  meV. The *color bar* indicates scattering intensity in unit of  $\text{mbr sr}^{-1} \text{meV}^{-1} \text{f. u.}^{-1}$ . The *white regions* in the *color plot* are gaps between neutron detectors. **i** Schematic of the electron Fermi pockets in  $\text{Li}_{0.8}\text{Fe}_{0.2}\text{OHFeSe}$  (*red*) and  $(\text{Ti,Rb})_x\text{Fe}_{2-y}\text{Se}_2$  (*blue*) adapted from ref. <sup>9</sup>. The calculated resonance wavevector is approximately  $(0.50, 0.3125)$  for 0.1 electrons per Fe<sup>14</sup>, which is consistent with our data  $(0.50, 0.31)$ . The *error bars* indicate one standard deviation



**Fig. 2** Momentum dependence of the spin excitations in  $\text{Li}_{0.8}\text{Fe}_{0.2}\text{ODFeSe}$  at  $T = 5$  K. **a–e** Constant-energy images acquired at 5 K and at indicated energies. **IQ**-dependent background was subtracted in **a–e** (Supplementary Note 4). For energies  $\geq 85$  meV, raw data are presented, **f–j**. The measurements in **a** and **b–j** were conducted at the incident neutron energies of 49.6 and 191.6 meV, respectively. Symmetry equivalent data were collected and averaged to enhance statistical accuracy. The color bar indicates scattering intensity in unit of  $\text{mbr sr}^{-1} \text{meV}^{-1} \text{f. u.}^{-1}$

Particularly, because the phase-pure single-crystalline  $\text{Li}_{0.8}\text{Fe}_{0.2}\text{-OHFeSe}$  with a sufficiently large size can be grown, the corresponding intrinsic bulk properties not subject to the influence of the interface or impurity phases can be investigated.

In this paper, we report neutron scattering measurements of the spin excitations over a wide range of momentum and energy in single-crystalline  $\text{Li}_{0.8}\text{Fe}_{0.2}\text{ODFeSe}$  ( $T_c = 41$  K) (“Methods”). Our data revealed nearly ring-shaped magnetic resonant excitations at  $\sim 21$  meV, comprising four elliptical peaks at  $(\pi, 0.62\pi)$  and equivalent wavevectors surrounding  $(\pi, \pi)$ . The presence of the resonance mode surrounding  $(\pi, \pi)$  indicates a sign reversal in the superconducting gap function between the electron pockets. As the energy increased, the spin excitations assumed a diamond shape, and they dispersed outward until the energy reached  $\sim 60$  meV and then inward at higher energies, eventually forming a big blob near  $(\pi, \pi)$  at 130 meV. Such an energy-dependent momentum structure and twisted dispersion of spin excitations near  $(\pi, \pi)$  resemble to those in hole-doped cuprates in several aspects<sup>34–37</sup>. Our results imply that such spin excitations are an essential ingredient for high temperature superconductivity in these materials.

## Results

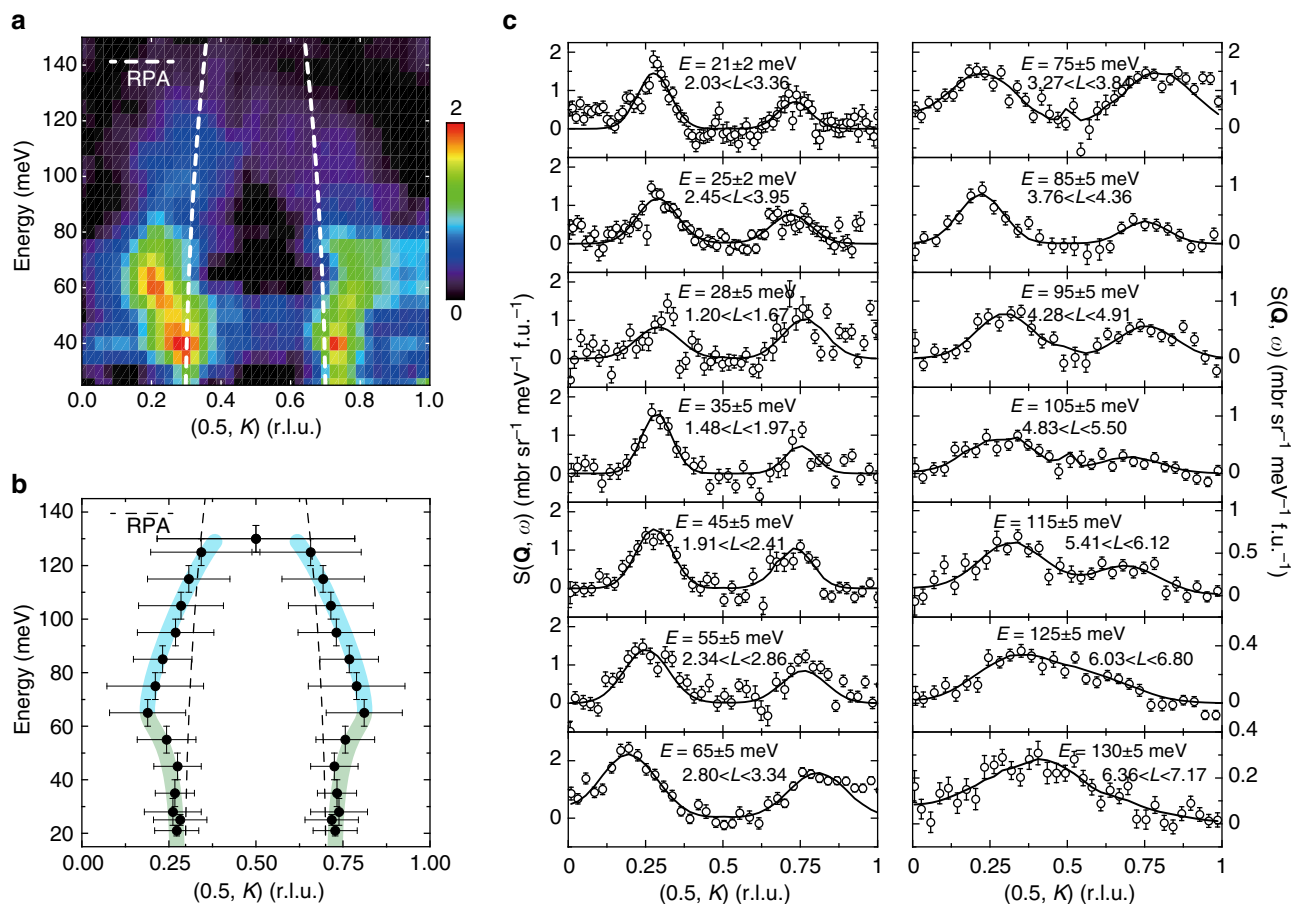
**Magnetic resonance mode.** We first used the PUMA thermal triple-axis spectrometer to measure low-energy spin excitations and their interplay with superconductivity. Figure 1a illustrates the energy scans at  $\mathbf{Q} = (0.5, 0.69, 0)$  in the superconducting state ( $T = 2.6$  K) and normal state ( $T = 45$  K), indicating that the scattering at  $\sim 21$  meV is enhanced below  $T_c$ , whereas that at lower energies is suppressed below  $T_c$ . To ensure a clear illustration of the effect of superconductivity, Fig. 1b presents the plot of the intensity difference associated with the energy scans between the superconducting state and normal state, revealing a spin-gap like feature below 18 meV and a resonance mode at  $\sim 21$  meV below the superconducting gap ( $2\Delta \approx 28$  meV)<sup>9, 38</sup>. A similar resonance mode at  $\sim 20$  meV is also revealed near  $\mathbf{Q} = (0.5, 0.31, L)$  in the data measured on the ARCS time-of-flight (TOF) chopper spectrometer (Fig. 1c). This is consistent with a spin exciton within the superconducting gap when the gap

function exhibited an opposite sign between the electron pockets at the adjacent zone edges<sup>14</sup>.

The resonance excitation at 21 meV is further confirmed by the **Q**-scans near  $(0.5, 0.69, 0)$  across  $T_c$ . Figure 1d shows that the normal-state spin excitation ( $T = 45$  K) can be described by a single Gaussian peak on a linear background and that it is significantly enhanced on entering the superconducting state ( $T = 2.6$  K). Figure 1g illustrates the detailed temperature dependence of the scattering, again confirming that the enhancement of the spin excitations is tightly associated with superconductivity and behaves like an order parameter below  $T_c$ .

To precisely determine the momentum structure of the resonance mode, we used the ARCS spectrometer to map out the Brillouin zone (“Methods”). The intensity difference image between the superconducting state and normal state [ $S(5\text{ K}) - S(50\text{ K})$ ] near the resonance energy (Fig. 1h) showed elliptical peaks at  $(0.5, 0.5 \pm \delta)$  and  $(0.5 \pm \delta, 0.5)$  symmetrically surrounding  $(0.5, 0.5)$ , forming a nearly ring-like structure. The peak position  $(0.5, 0.5 \pm 0.19)$  and the anisotropy of the scattering in momentum space were further confirmed by constant-energy cuts, revealing a significant difference between the peak widths along the **H** and **K** directions (Fig. 1e, f). We noted that the observed incommensurability  $\delta = 0.19$  was smaller than that observed ( $\delta \approx 0.25$ ) for the resonance mode in  $\text{A}_x\text{Fe}_{2-y}\text{Se}_2$ <sup>27–29</sup>. This is probably because the electron doping level in  $\text{Li}_{0.8}\text{Fe}_{0.2}\text{-ODFeSe}$  ( $\sim 0.08\text{--}0.1$  electrons per Fe) is lower (less overdoped) than that in  $\text{A}_x\text{Fe}_{2-y}\text{Se}_2$  ( $\sim 0.18$  electrons per Fe)<sup>9</sup>. Therefore, the low-energy magnetic scattering in  $\text{Li}_{0.8}\text{Fe}_{0.2}\text{ODFeSe}$  is closer to  $(\pi, \pi)$  compared with that in  $\text{A}_x\text{Fe}_{2-y}\text{Se}_2$  (Fig. 1h, i).

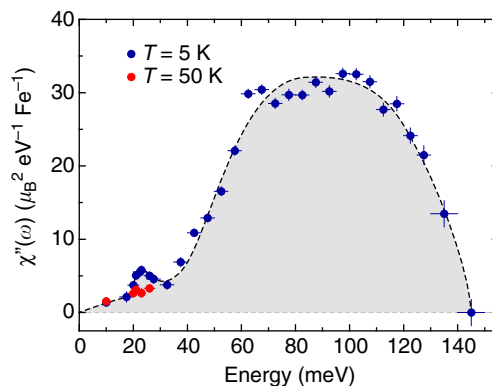
**Momentum and energy dependence of high-energy spin excitations.** To acquire a complete picture of the spin excitations, we present in Fig. 2 the evolution of the spin response with energy. At low energies, the momentum structure of the spin excitations was similar to that of the resonance mode (Fig. 2a); as the energy increased, the magnetic response assumed a diamond shape and dispersed outward (Figs. 2b–d). Concurrently, the major axis of the elliptical peaks was rotated by  $90^\circ$  at energies of  $\sim 59\text{--}66$  meV with respect to the axis of those observed at lower



**Fig. 3** Dispersion of the spin excitations in  $\text{Li}_{0.8}\text{Fe}_{0.2}\text{ODFeSe}$  at  $T = 5$  K. **a** Background subtracted  $E$ - $K$  slice with incident neutron energy of 191.6 meV. A twisted dispersion is clearly illustrated. The incident neutron beam was parallel to the  $c$  axis and  $L$  was coupled with the energy transfer. No  $L$  modulations were observed from the scattering, indicating a two-dimensional nature of the magnetism. The color bar indicates scattering intensity in unit of  $\text{mbr sr}^{-1} \text{meV}^{-1} \text{f.u.}^{-1}$ . **b** Dispersion acquired from the constant energy cuts in **c**. The horizontal error bars represent the full-width at half-maximum of the Gaussian peaks in **c**; the vertical error bars represent the energy integration interval. The curves are guides to the eye. **c** Constant energy cuts along the  $(0.5, K)$  direction at the indicated energies and energy/ $L$  integration interval. The measurements were conducted at incident neutron energies of 49.6 and 191.6 meV. The peak positions are determined by fitting with Gaussian profiles convoluted with the instrumental resolution, with a correction of the  $\text{Fe}^{2+}$  magnetic form factor. The error bars indicate one standard deviation. We note that the magnetic intensities in **a**, **c** and Fig. 2 are asymmetric because the magnetic form factor drops at larger  $|\mathbf{Q}|$

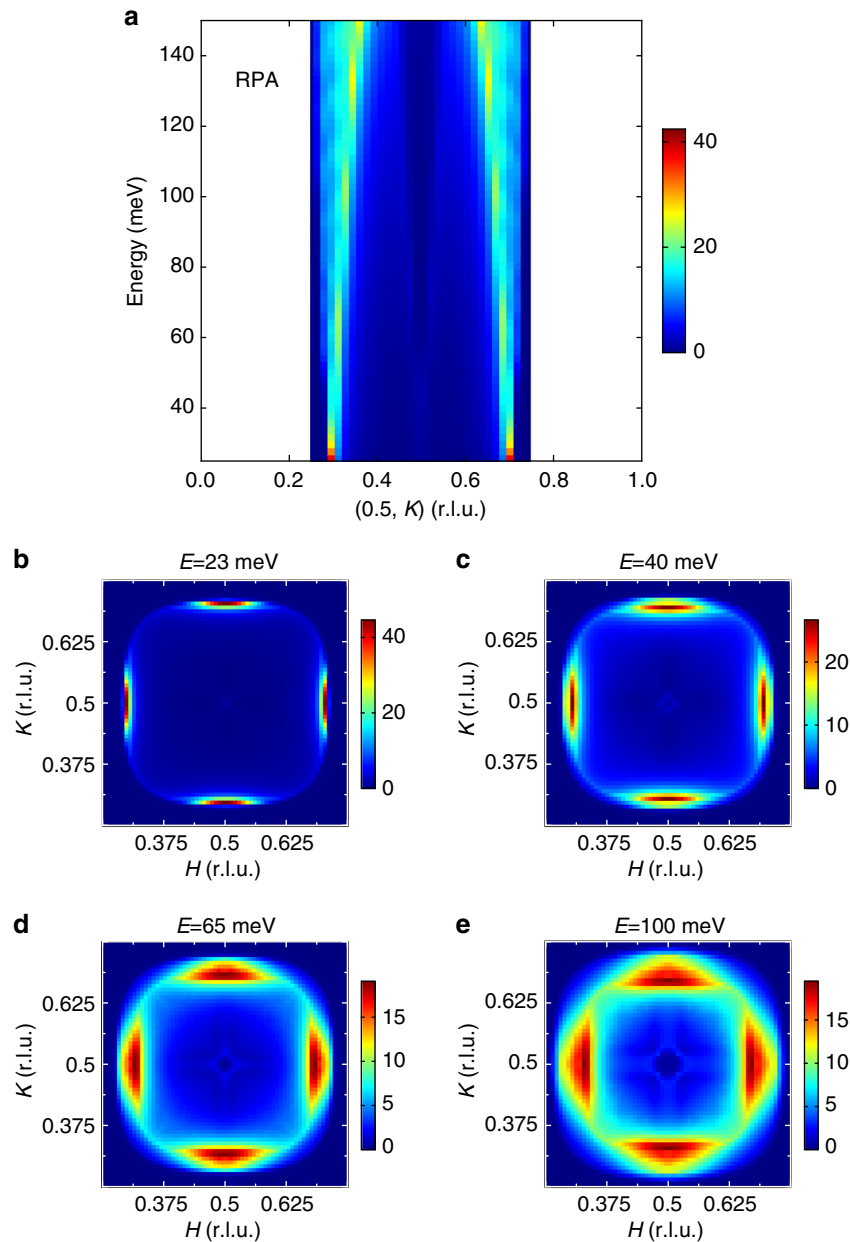
energy (marked by dashed ellipses in Fig. 2a, d; the rotation of the elliptical peaks is further illustrated in Supplementary Fig. 1). When the energy exceeded 66 meV, the scattering dispersed inward and formed a nearly ring-like pattern at 100 meV, and eventually becoming a big blob near  $(0.5, 0.5)$  at 130 meV (Fig. 2e-j). We note that a weak ferromagnetic peak near  $Q \approx 0$ , which likely arises from the Li-Fe layer, was revealed by small angle neutron scattering measurements in polycrystalline ( ${}^7\text{Li}_{0.82}\text{Fe}_{0.18}\text{OD}$ ) $\text{FeSe}$  ( $T_c = 18$  K)<sup>39</sup>. This wavevector ( $Q \approx 0$ ) was not covered in our measurements in the first Brillouin zone. We also did not observe clear ferromagnetic excitations in the second Brillouin zone, which could be due to the intrinsic weak signal and the decreased magnetic form factor. It is also possible that our sample which has a different chemical composition and a higher  $T_c$  (41 K) has weaker or no ferromagnetic correlations.

The overall dispersion of the spin excitations in  $\text{Li}_{0.8}\text{Fe}_{0.2}\text{ODFeSe}$  can be seen more clearly in  $E$ - $Q$  space. As the energy increased, the magnetic excitations dispersed outward and then inward (Fig. 3a, b). This dispersion is further confirmed by the constant-energy cuts along the  $K$  direction at various energies in Fig. 3c. Such a strongly energy-dependent momentum structure and twisted dispersions of spin excitations are in analogy to those of hole-doped cuprate superconductors, which typically



**Fig. 4** Energy dependence of the dynamic local susceptibility of  $\text{Li}_{0.8}\text{Fe}_{0.2}\text{ODFeSe}$  at  $T = 5$  and 50 K. The vertical and horizontal bars represent the standard deviation and integrated energy interval, respectively. The dashed curves are guides to the eye

demonstrate the existence of inflection/saddle points in the dispersion curves and the rotation of the scattering pattern across inflection/saddle points<sup>34–36</sup>. On the other hand, spin excitations in most iron-pnictide superconductors generally disperse outward



**Fig. 5** Calculated dispersion of the spin excitations of  $\text{Li}_{0.8}\text{Fe}_{0.2}\text{ODFeSe}$  in the superconducting state. The calculation was done using a BCS/RPA approach described in the main text. **a** Dispersion of the spin excitations. **b-e** Momentum structure of the spin excitations at indicated energies. The color bars indicate intensity in arbitrary unit

from  $(\pi, 0)$  to  $(\pi, \pm\pi)$  which can usually be described by either an itinerant or local moment model<sup>1</sup>, or the density functional theory (DFT) combined with dynamical mean field theory (DMFT) taking into account both correlation effects and realistic band structures<sup>40</sup>. It should be noted that FeTe-based materials also display unusual hourglass-like dispersions<sup>41–43</sup>. However, the magnetic interaction in FeTe-based materials is very complicated because of the spiral magnetism induced by the interstitial Fe<sup>41</sup> and the competition between the double stripe  $(\pi/2, \pi/2)$  and stripe  $(\pi, 0)$  magnetism<sup>40, 44</sup>.

**Momentum integrated local susceptibility.** The use of phase-pure single crystals enables executing quantitative spin-excitation measurements in absolute units, which has not been feasible for phase-separated  $\text{A}_x\text{Fe}_{2-y}\text{Se}_2$ . Figure 4 shows

the energy dependence of the local dynamic susceptibility of  $\text{Li}_{0.8}\text{Fe}_{0.2}\text{ODFeSe}$  in absolute units, revealing a two-peak structure, which is similar to those of iron pnictides and FeSe<sup>1, 2, 45, 46</sup>, although the momentum structures of the spin excitations in these materials are quite different. The peak of the lower energy component corresponds to the resonance mode; the higher energy component, which carries much more spectral weight, peaked near 60–110 meV (Fig. 4). Notably, the integrated resonance spectral weight ( $\chi''_{5K} - \chi''_{50K} = 0.029(7) \mu_B^2 \text{Fe}^{-1}$ ) in  $\text{Li}_{0.8}\text{Fe}_{0.2}\text{ODFeSe}$  is at least one order of magnitude larger than that in bulk FeSe ( $T_c = 8.7 \text{ K}$ ). However, the high energy component of the spectral weight is much lower than that in FeSe<sup>2, 47</sup>. The effect of the electron-doping seems to entail the considerable suppression of high-energy responses and enhancement of low-energy responses. This behavior resembles

that of hole-doped cuprates and hole-doped iron pnictides<sup>36, 45</sup>, but differs from that of the electron-doped iron pnictides in which the high-energy spin excitations were essentially doping independent and the superconductivity was completely suppressed in the over electron-doped regime<sup>45</sup>. The spin excitation band widths of  $\text{Li}_{0.8}\text{Fe}_{0.2}\text{ODFeSe}$  and  $\text{FeSe}$  are lower than those of most iron pnictides, indicating stronger electron correlations in  $\text{FeSe}$ -based superconductors<sup>40</sup>.

**BCS/RPA calculations and DFT + DMFT calculations.** The magnetism in iron-based materials may arise from either the exchange interaction of the local moments or Fermi surface nesting of itinerant electrons, or both<sup>1</sup>. To the best of our knowledge, the observed energy-dependent momentum structure and twisted dispersion of the spin excitations have not been predicted in the known theoretical calculations in HEDIS based on either a local or itinerant picture. Using a BCS/RPA approach<sup>14</sup>, we have calculated the magnetic susceptibility from a 2D tight-binding five-orbital Hubbard–Hund Hamiltonian that describes the electronic structure of an  $\text{FeSe}$  system with only electron pockets<sup>14</sup>. For the superconducting gap, we have used a phenomenological  $d_{x^2-y^2}$  gap  $\Delta(k) = \Delta_0(\cos k_x - \cos k_y)$ , which is close to isotropic on the electron pockets and changes sign between them. Previous calculations have shown that this type of gap structure leads to a neutron resonance in  $\chi(q, \omega)$  near  $q \approx (\pi, 0.6\pi)$  that arises from scattering between the electron pockets on which the gap changes sign<sup>14, 48</sup>. The interaction matrix in orbital space used in the RPA calculation contains on-site matrix elements for the intra-orbital and inter-orbital Coulomb repulsions  $U$  and  $U'$ , and for the Hund's-rule coupling and pair-hopping terms  $J$  and  $J'$ , respectively. Here, we have used spin-rotationally invariant parameters  $J = J' = U/4$  and  $U' = U/2$  with  $U = 0.96$  eV. Figure 5a shows the calculated dispersion of spin excitations as the energy increases and Fig. 5b–e displays its momentum structure for different energies. As one sees, the momentum position of the magnetic excitations below 40 meV is broadly consistent with the experiments (Figs. 3a, b and 5a). However, the BCS/RPA calculations fail to describe the outward dispersion at higher energies seen in Fig. 3a, b as well as the twisted momentum structure seen in Fig. 2. We also used a combination of DFT and DMFT, so called DFT + DMFT as implemented in ref. 40 to compute the electronic structure and spin dynamics of this compound (Supplementary Fig. 2; Supplementary Note 1). Similar to the BCS/RPA calculations, the DFT + DMFT-calculated spin excitation spectra also only show inward dispersion, and no twisted structure is observed (Supplementary Fig. 2i).

## Discussion

The distinct dispersion of spin excitations below and above ~60 meV might imply different origins of these excitations. The low-energy spin excitations are possibly related to Fermi surface nesting, as the resonance wavevector and its doping dependence agree with our BCS/RPA calculations<sup>9, 14, 27</sup>; whereas, the high-energy spin excitations, which carry more spectral weight, are possibly due to vestigial short-range magnetic exchange interactions, as also observed in hole-doped cuprates<sup>36, 37</sup>. Regardless of their origins, the spin excitations surrounding  $(\pi, \pi)$  as well as the electron Fermi pockets connected by  $(\pi, \pi)$  may interact collaboratively to enhance superconductivity. These structures of spin excitations and Fermi surfaces are analogous to those of hole-doped cuprates, thus implying that such spin excitations are a key ingredient for the remarkably high  $T_c$  in these materials.

Recently, we noticed a related paper describing low-energy spin excitations on  $\text{Li}_{1-x}\text{Fe}_x\text{ODFe}_{1-y}\text{Se}$  powder samples<sup>49</sup>.

## Methods

**Sample growth and characterizations.**  $\text{Li}_{0.8}\text{Fe}_{0.2}\text{ODFeSe}$  single crystals were grown using a hydrothermal method similar to that described in ref. 50, and were deuterated to reduce the incoherent scattering from hydrogen atoms for the inelastic neutron scattering measurements. Magnetic susceptibility and resistivity measurements conducted on a crystal from the same batch as those measured with neutrons showed a sharp superconducting transition at 41 K, signifying the high quality of the crystal. The single crystalline sample was also ground into powder for the X-ray diffraction refinements (Supplementary Fig. 3; Supplementary Note 2; Supplementary Table 1). The refined structure parameters are consistent with those in previous reports<sup>32</sup>.

**Inelastic neutron scattering experiments.** Inelastic neutron scattering measurements were carried out on the PUMA thermal neutron triple-axis spectrometer (TAS) at the Heinz Maier–Leibnitz Zentrum (MLZ), TU München, Germany, and the ARCS TOF chopper spectrometer at the Spallation Neutron Source of Oak Ridge National Laboratory, USA (Supplementary Note 3). For the TAS experiment, ~30 pieces of single crystals with a total mass of 3.2 g were coaligned in the  $(H K 0)$  plane to a mosaicity within  $\sim 4^\circ$ . For the TOF experiment, 8.5 g crystals were coaligned to a mosaicity within  $\sim 5^\circ$ ; the incident beam was parallel to the  $c$ -axis. The wavevector  $\mathbf{Q}$  at  $(q_x, q_y, q_z)$  is defined as  $(H, K, L) = (q_x a/2\pi, q_y a/2\pi, q_z c/2\pi)$  reciprocal lattice units (r.l.u.) in the 1-Fe unit cell. Here,  $(0.5, 0.5)$  and  $(0.5, 0)$  correspond to  $(\pi, \pi)$  and  $(\pi, 0)$ , respectively. The IQI-dependent background was subtracted for the data in Fig. 2a–e following the practice of ref. 2 (Supplementary Fig. 4; Supplementary Note 4). Additional low-energy data are shown in Supplementary Fig. 5 (Supplementary Note 5). The scattering intensity was normalized into absolute units by calibrating it against the incoherent scattering of a standard vanadium sample.

**Data availability.** All data that support the findings of this study are available from the corresponding authors upon request.

Received: 14 September 2016 Accepted: 7 June 2017

Published online: 25 July 2017

## References

- Dai, P. C. Antiferromagnetic order and spin dynamics in iron-based superconductors. *Rev. Mod. Phys.* **87**, 855–896 (2015).
- Wang, Q. et al. Magnetic ground state of  $\text{FeSe}$ . *Nat. Commun.* **7**, 12182 (2016).
- Zhang, Y. et al. Nodeless superconducting gap in  $\text{A}_x\text{Fe}_2\text{Se}_2$  ( $A=\text{K}, \text{Cs}$ ) revealed by angle-resolved photoemission spectroscopy. *Nat. Mater.* **10**, 273–277 (2011).
- Qian, T. et al. Absence of a holelike Fermi surface for the iron-based  $\text{K}_{0.8}\text{Fe}_{1.7}\text{Se}_2$  superconductor revealed by angle-resolved photoemission spectroscopy. *Phys. Rev. Lett.* **106**, 187001 (2011).
- Mou, D. et al. Distinct Fermi surface topology and nodeless superconducting gap in a  $(\text{Tl}_{0.58}\text{Rb}_{0.42})\text{Fe}_{1.72}\text{Se}_2$  superconductor. *Phys. Rev. Lett.* **106**, 107001 (2011).
- Dagotto, E. The unexpected properties of alkali metal iron selenide superconductors. *Rev. Mod. Phys.* **85**, 849–867 (2013).
- He, S. et al. Phase diagram and electronic indication of high-temperature superconductivity at 65 K in single-layer  $\text{FeSe}$  films. *Nat. Mater.* **12**, 605–610 (2013).
- Tan, S. et al. Interface-induced superconductivity and strain-dependent spin density waves in  $\text{FeSe}/\text{SrTiO}_3$  thin films. *Nat. Mater.* **12**, 634–640 (2013).
- Zhao, L. et al. Common electronic origin of superconductivity in  $(\text{Li}, \text{Fe})\text{OHFeSe}$  bulk superconductor and single-layer  $\text{FeSe}/\text{SrTiO}_3$  films. *Nat. Commun.* **7**, 10608 (2016).
- Niu, X. H. et al. Surface electronic structure and isotropic superconducting gap in  $(\text{Li}_{0.8}\text{Fe}_{0.2})\text{OHFeSe}$ . *Phys. Rev. B* **92**, 060504 (2015).
- Wang, Q.-Y. et al. Interface-induced high-temperature superconductivity in single unit-cell  $\text{FeSe}$  films on  $\text{SrTiO}_3$ . *Chin. Phys. Lett.* **29**, 037402 (2012).
- Ge, J.-F. et al. Superconductivity above 100 K in single-layer  $\text{FeSe}$  films on doped  $\text{SrTiO}_3$ . *Nat. Mater.* **14**, 285–289 (2015).
- Guo, J. et al. Superconductivity in the iron selenide  $\text{K}_x\text{Fe}_2\text{Se}_2$  ( $0 \leq x \leq 1.0$ ). *Phys. Rev. B* **82**, 180520 (2010).
- Maier, T. A., Graser, S., Hirschfeld, P. J. & Scalapino, D. J. d-wave pairing from spin fluctuations in the  $\text{K}_x\text{Fe}_{2-y}\text{Se}_2$  superconductors. *Phys. Rev. B* **83**, 100515 (2011).
- Wang, F. et al. The electron pairing of  $\text{K}_x\text{Fe}_{2-y}\text{Se}_2$ . *Europhys. Lett.* **93**, 57003 (2011).
- Maiti, S. et al. Evolution of the superconducting state of Fe-based compounds with doping. *Phys. Rev. Lett.* **107**, 147002 (2011).

17. Das, T. & Balatsky, A. V. Stripes, spin resonance, and nodeless d-wave pairing symmetry in Fe<sub>2</sub>Se<sub>2</sub>-based layered superconductors. *Phys. Rev. B* **84**, 014521 (2011).
18. Mazin, I. I. Symmetry analysis of possible superconducting states in K<sub>x</sub>Fe<sub>y</sub>Se<sub>2</sub> superconductors. *Phys. Rev. B* **84**, 024529 (2011).
19. Saito, T., Onari, S. & Kontani, H. Emergence of fully gapped s<sup>++</sup>-wave and nodal d-wave states mediated by orbital and spin fluctuations in a ten-orbital model of KFe<sub>2</sub>Se<sub>2</sub>. *Phys. Rev. B* **83**, 140512 (2011).
20. Pandey, S., Chubukov, A. V. & Khodas, M. Spin resonance in AFe<sub>2</sub>Se<sub>2</sub> with s-wave pairing symmetry. *Phys. Rev. B* **88**, 224505 (2013).
21. Hao, N. N. & Hu, J. P. Odd parity pairing and nodeless antiphase s<sup>±</sup> in iron-based superconductors. *Phys. Rev. B* **89**, 045144 (2014).
22. Nica, E. M., Yu, R. & Si, Q. Orbital selectivity and emergent superconducting state from quasi-degenerate s- and d-wave pairing channels in iron-based superconductors. Preprint at <http://arxiv.org/abs/1505.04170> (2015).
23. Si, Q., Yu, R. & Abrahams, E. High-temperature superconductivity in iron pnictides and chalcogenides. *Nat. Rev. Mater* **1**, 16017 (2016).
24. Yang, F., Wang, F. & Lee, D. H. Fermiology, orbital order, orbital fluctuations, and Cooper pairing in iron-based superconductors. *Phys. Rev. B* **88**, 100504 (2013).
25. Li, Z.-X., Wang, F., Yao, H. & Lee, D.-H. What makes the T<sub>c</sub> of monolayer FeSe on SrTiO<sub>3</sub> so high: a sign-problem-free quantum Monte Carlo study. *Sci. Bull.* **61**, 925–930 (2016).
26. Fan, Q. et al. Plain s-wave superconductivity in single-layer FeSe on SrTiO<sub>3</sub> probed by scanning tunnelling microscopy. *Nat. Phys* **11**, 946–952 (2015).
27. Park, J. T. et al. Magnetic resonant mode in the low-energy spin-excitation spectrum of superconducting Rb<sub>2</sub>Fe<sub>4</sub>Se<sub>5</sub> single crystals. *Phys. Rev. Lett.* **107**, 177005 (2011).
28. Taylor, A. E. et al. Spin-wave excitations and superconducting resonant mode in Cs<sub>x</sub>Fe<sub>2-y</sub>Se<sub>2</sub>. *Phys. Rev. B* **86**, 094528 (2012).
29. Friemel, G. et al. Conformity of spin fluctuations in alkali-metal iron selenide superconductors inferred from the observation of a magnetic resonant mode in K<sub>x</sub>Fe<sub>2-y</sub>Se<sub>2</sub>. *Europhys. Lett.* **99**, 67004 (2012).
30. Li, W. et al. KFe<sub>2</sub>Se<sub>2</sub> is the parent compound of K-doped iron selenide superconductors. *Phys. Rev. Lett.* **109**, 057003 (2012).
31. Lee, J. J. et al. Interfacial mode coupling as the origin of the enhancement of T<sub>c</sub> in FeSe films on SrTiO<sub>3</sub>. *Nature* **515**, 245–248 (2014).
32. Lu, X. F. et al. Coexistence of superconductivity and antiferromagnetism in (Li<sub>0.8</sub>Fe<sub>0.2</sub>)OHFeSe. *Nat. Mater.* **14**, 325–329 (2015).
33. Pachmayr, U. et al. Coexistence of 3d-ferromagnetism and superconductivity in [(Li<sub>1-x</sub>Fe<sub>x</sub>)OH](Fe<sub>1-y</sub>Li<sub>y</sub>)Se. *Angew. Chem. Int. Ed.* **54**, 293–297 (2015).
34. Hayden, S. M., Mook, H. A., Dai, P. C., Perring, T. G. & Dogan, F. The structure of the high-energy spin excitations in a high-transition-temperature superconductor. *Nature* **429**, 531–534 (2004).
35. Tranquada, J. M. et al. Quantum magnetic excitations from stripes in copper oxide superconductors. *Nature* **429**, 534–538 (2004).
36. Vignolle, B. et al. Two energy scales in the spin excitations of the high-temperature superconductor La<sub>2-x</sub>Sr<sub>x</sub>CuO<sub>4</sub>. *Nat. Phys* **3**, 163–167 (2007).
37. Lipscombe, O. J. et al. Persistence of high-frequency spin fluctuations in overdoped superconducting La<sub>2-x</sub>Sr<sub>x</sub>CuO<sub>4</sub> (x = 0.22). *Phys. Rev. Lett.* **99**, 067002 (2007).
38. Du, Z. et al. Scrutinizing the double superconducting gaps and strong coupling pairing in (Li<sub>1-x</sub>Fe<sub>x</sub>)OHFeSe. *Nat. Commun.* **7**, 10565 (2016).
39. Lynn, J. W. et al. Neutron investigation of the magnetic scattering in an iron-based ferromagnetic superconductor. *Phys. Rev. B* **92**, 060510 (2015).
40. Yin, Z. P., Haule, K. & Kotliar, G. Spin dynamics and orbital-antiphase pairing symmetry in iron-based superconductors. *Nat. Phys* **10**, 845–850 (2014).
41. Stock, C. et al. Soft striped magnetic fluctuations competing with superconductivity in Fe<sub>1+x</sub>Te. *Phys. Rev. B* **90**, 121113 (2014).
42. Zaliznyak, I. A. et al. Unconventional temperature enhanced magnetism in Fe<sub>1.1</sub>Te. *Phys. Rev. Lett.* **107**, 216403 (2011).
43. Li, S. L. et al. Normal-state hourglass dispersion of the spin excitations in FeSe<sub>x</sub>Te<sub>1-x</sub>. *Phys. Rev. Lett.* **105**, 157002 (2010).
44. Yin, Z. P., Haule, K. & Kotliar, G. Fractional power-law behavior and its origin in iron-chalcogenide and ruthenate superconductors: insights from first-principles calculations. *Phys. Rev. B* **86**, 195141 (2012).
45. Wang, M. et al. Doping dependence of spin excitations and its correlations with high-temperature superconductivity in iron pnictides. *Nat. Commun.* **4**, 2874 (2013).
46. Liu, M. et al. Nature of magnetic excitations in superconducting BaFe<sub>1.9</sub>Ni<sub>0.1</sub>As<sub>2</sub>. *Nat. Phys* **8**, 376–381 (2012).
47. Wang, Q. et al. Strong interplay between stripe spin fluctuations, nematicity and superconductivity in FeSe. *Nat. Mater.* **15**, 159–163 (2016).
48. Friemel, G. et al. Reciprocal-space structure and dispersion of the magnetic resonant mode in the superconducting phase of Rb<sub>x</sub>Fe<sub>2-y</sub>Se<sub>2</sub> single crystals. *Phys. Rev. B* **85**, 140511 (2012).
49. Davies, N. R. et al. Spin resonance in the superconducting state of Li<sub>1-x</sub>Fe<sub>x</sub>ODFe<sub>1-y</sub>Se observed by neutron spectroscopy. *Phys. Rev. B* **94**, 144503 (2016).
50. Dong, X. L. et al. (Li<sub>0.84</sub>Fe<sub>0.16</sub>)OHFe<sub>0.98</sub>Se superconductor: ion-exchange synthesis of large single-crystal and highly two-dimensional electron properties. *Phys. Rev. B* **92**, 064515 (2015).

## Acknowledgements

This work was supported by the National Natural Science Foundation of China (Grant No. 11374059), the National Key R&D Program of the MOST of China (Grant No. 2016YFA0300203), and the Ministry of Science and Technology of China (Program 973: 2015CB921302). Z.Y. was supported by the National Natural Science Foundation of China (Grant No. 11674030) and the National Key Research and Development Program of China (contract No. 2016YFA0302300). T.A.M. was supported by the U.S. Department of Energy, Office of Basic Energy Sciences, Materials Sciences and Engineering Division. A portion of this research used resources at the Spallation Neutron Source, a DOE Office of Science User Facility operated by the Oak Ridge National Laboratory.

## Author contributions

J.Z. planned the research. D.H., Y.F., and B.P. synthesized the sample. B.P., D.H., Y.S., Q.W., Y.H., and H.W. characterized the sample. B.P. and Y.S. conducted the neutron experiments with the experimental assistance from J.T.P. and A.D.C. T.A.M. did the BCS/RPA calculations. Z.Y. performed DFT + DMFT calculations. J.Z., B.P., and Y.S. analyzed the data and wrote the paper.

## Additional information

**Supplementary Information** accompanies this paper at doi:10.1038/s41467-017-00162-x.

**Competing interests:** The authors declare no competing financial interests.

**Reprints and permission** information is available online at <http://npg.nature.com/reprintsandpermissions/>

**Publisher's note:** Springer Nature remains neutral with regard to jurisdictional claims in published maps and institutional affiliations.

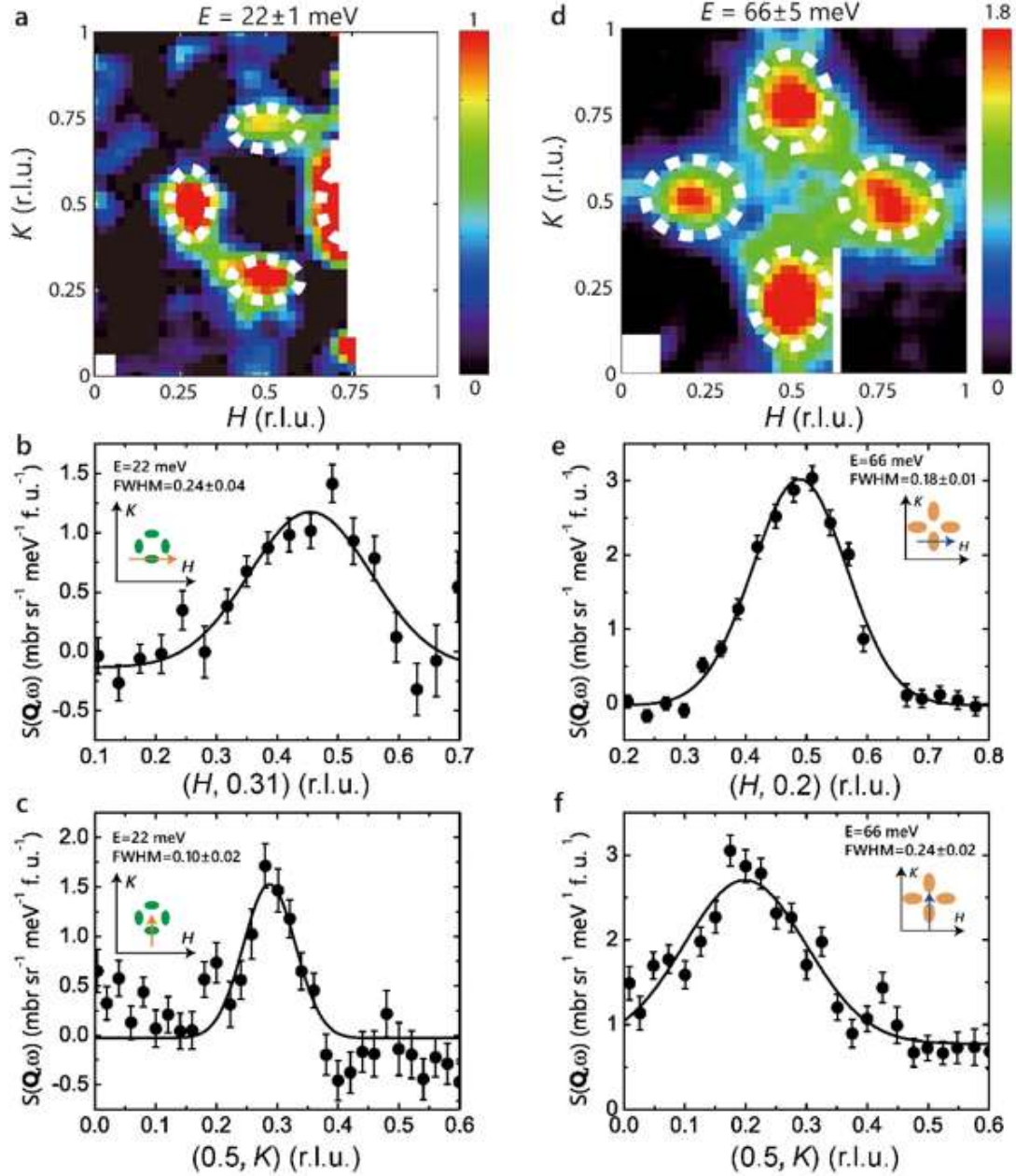


**Open Access** This article is licensed under a Creative Commons Attribution 4.0 International License, which permits use, sharing, adaptation, distribution and reproduction in any medium or format, as long as you give appropriate credit to the original author(s) and the source, provide a link to the Creative Commons license, and indicate if changes were made. The images or other third party material in this article are included in the article's Creative Commons license, unless indicated otherwise in a credit line to the material. If material is not included in the article's Creative Commons license and your intended use is not permitted by statutory regulation or exceeds the permitted use, you will need to obtain permission directly from the copyright holder. To view a copy of this license, visit <http://creativecommons.org/licenses/by/4.0/>.

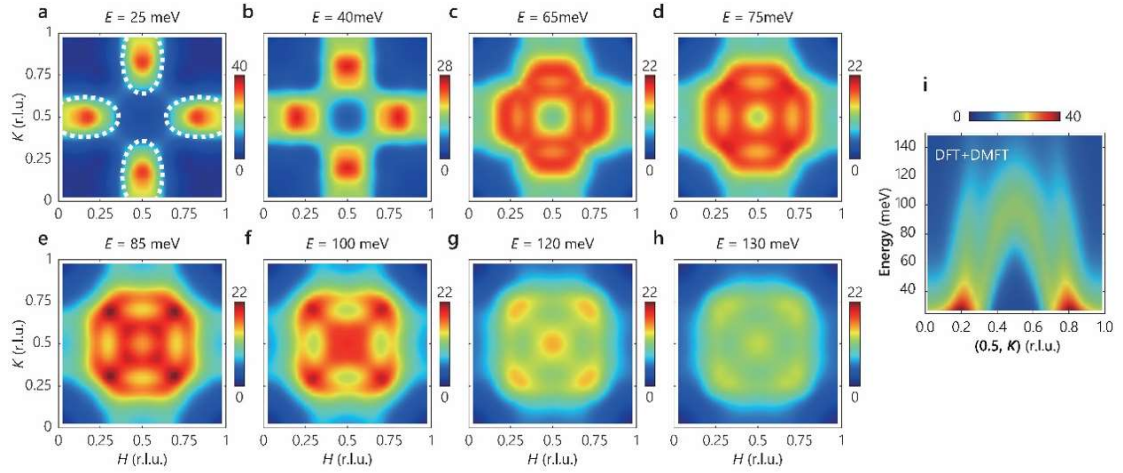
© The Author(s) 2017

File name: Supplementary Information

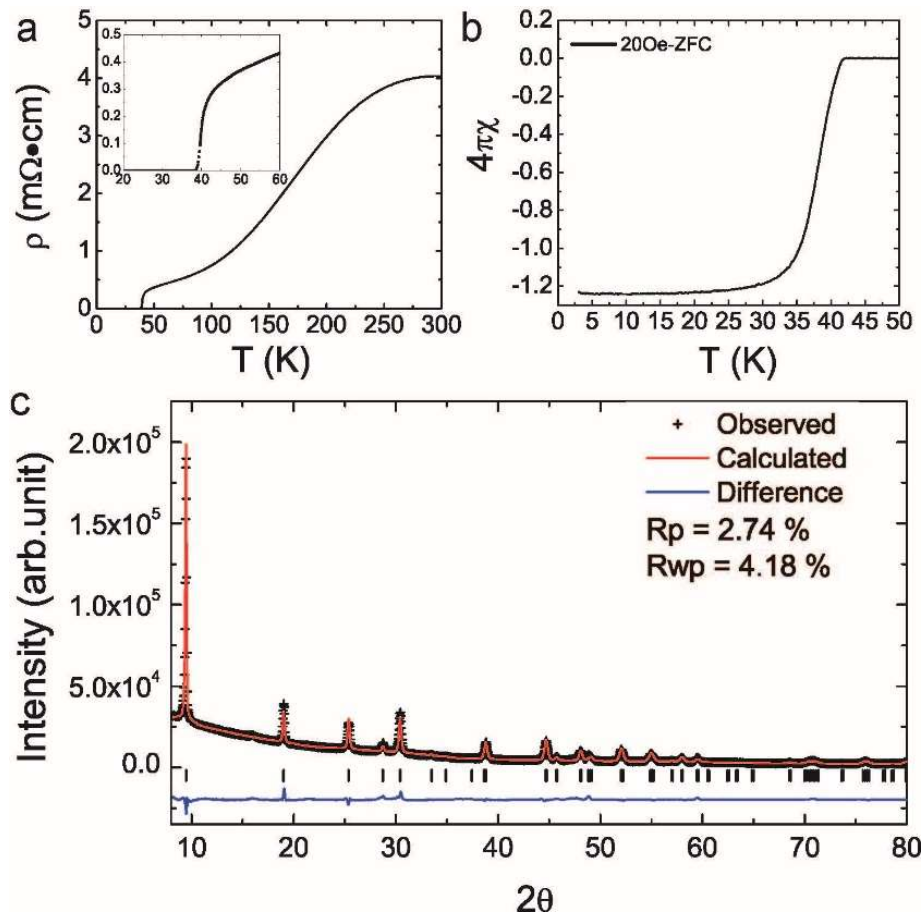
Description: Supplementary Figures, Supplementary Table, Supplementary Notes and  
Supplementary References



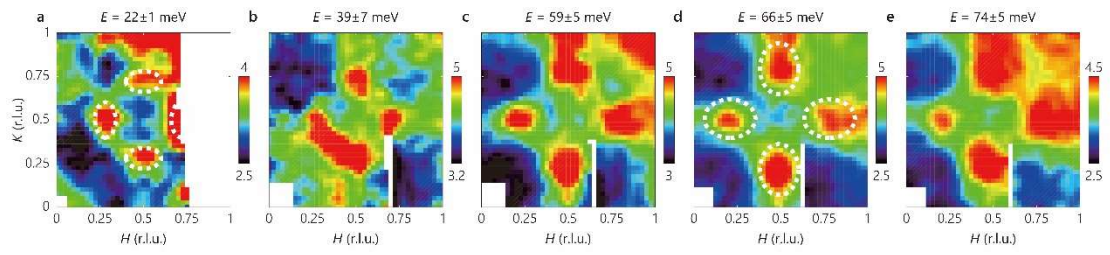
**Supplementary Figure 1: Rotation of the spin excitation pattern.** (a) Constant energy image at 22 meV. (b, c) Constant-energy cuts along the  $H$  (b) and  $K$  (c) directions at 22 meV. (d) Constant energy image at 66 meV. (e, f) Constant-energy cuts along the  $H$  (e) and  $K$  (f) directions at 66 meV. The insets in (b,c,e,f) indicate the cutting directions. The constant-energy cuts at 22 meV in (b,c) show that the full-width-at-half-maximum (FWHM) of  $H$  cut ( $0.24 \pm 0.04$  r.l.u.) is larger than that ( $0.10 \pm 0.02$  r.l.u.) of  $K$  cut. Here, r.l.u. represents reciprocal lattice units. On the other hand, at 66 meV the FWHM of  $H$  cut ( $0.18 \pm 0.01$  r.l.u.) is smaller than that ( $0.24 \pm 0.02$  r.l.u.) of  $K$  cut, as shown in (e,f). This clearly shows that the major axis of the elliptical peaks at 66 meV was rotated by  $90^\circ$  with respect to the axis of those at 22 meV. The color bars indicate absolute scattering intensity in unit of  $\text{mbr sr}^{-1} \text{meV}^{-1} \text{f. u.}^{-1}$ . The error bars indicate one standard deviation.



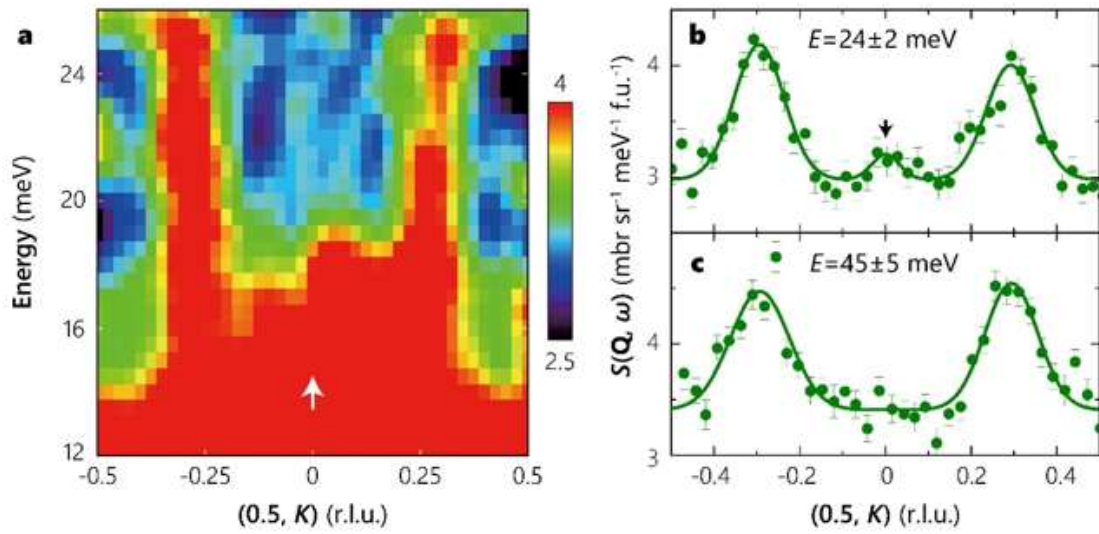
**Supplementary Figure 2: DFT+DMFT calculations of the spin excitation spectra in  $\text{Li}_{0.8}\text{Fe}_{0.2}\text{ODFeSe}$ .** **a-h**, Momentum structure of the spin excitations at the indicated energies. **i**, Dispersion of the spin excitations. The calculations show four longitudinal elongated elliptical peaks at 25 meV, marked by dashed ellipses in **(a)**. The calculated dispersions are shown in **(i)** which only show inward dispersion, and no twisted structure is observed. The color bars indicate intensity in arbitrary unit.



**Supplementary Figure 3: Characterization of  $\text{Li}_{0.8}\text{Fe}_{0.2}\text{ODFeSe}$  single crystals. (a)** In-plane resistivity of the  $\text{Li}_{0.8}\text{Fe}_{0.2}\text{ODFeSe}$  single crystal. **(b)** Zero-field-cooling (ZFC) magnetic susceptibility under magnetic field of 20 Oe applied perpendicular to the  $c$  axis. The magnetic shielding fraction is close to 100%, indicating bulk superconductivity. **(c)** Powder X-ray diffraction pattern and refinements of ground  $\text{Li}_{0.8}\text{Fe}_{0.2}\text{ODFeSe}$  single crystals.



**Supplementary Figure 4: Raw constant-energy images at the indicated energies.** The selected energies are from **(a)**  $22 \pm 1$  meV to **(e)**  $74 \pm 5$  meV. The white ellipses in **(a)** and **(d)** clearly show the rotation of spin excitation pattern. The color bars indicate absolute scattering intensity in unit of  $\text{mbr sr}^{-1} \text{meV}^{-1} \text{f. u.}^{-1}$ .



**Supplementary Figure 5: Low energy excitation spectrum at 5 K.** (a)  $E$ - $K$  slice with incident neutron energy of  $E_i = 49.6$  meV at 5 K. The white arrow indicates the weak excitations near (0.5, 0). The color bars indicate absolute scattering intensity in unit of  $\text{mbr sr}^{-1} \text{meV}^{-1} \text{f.u.}^{-1}$ . (b, c) Constant-energy cuts along the  $K$  direction at  $E = 24$  meV (b) and 45 meV (c). The excitations at (0.5, 0) are no longer discernable at 45 meV. The measurements in (b) and (c) were conducted at incident energies of 49.6 and 191.6 meV, respectively. The error bars indicate one standard deviation.

**Supplementary Table 1.** Refined structural parameters for  $\text{Li}_{0.8}\text{Fe}_{0.2}\text{ODFeSe}$  at room temperature.

---

Space group	<i>P4/nmm</i>				
<i>a</i> (Å)	3.78156 (9)				
<i>c</i> (Å)	9.31139(43)				
$\chi^2$	16.2				
<i>R<sub>p</sub></i>	2.74				
<i>R<sub>wp</sub></i>	4.18				
Atom	<i>x</i>	<i>y</i>	<i>z</i>	<i>B<sub>iso</sub></i>	<i>occupancy</i>
Li	0.75000	0.25000	0.00000	1.094	0.101
Fe1	0.75000	0.25000	0.00000	1.094	0.024
O	0.25000	0.25000	-	1.094	0.125
			0.05709(141)		
D	0.25000	0.25000	0.17400	1.094	0.125
Fe2	0.75000	0.25000	0.50000	0.705(143)	0.125
Se	0.25000	0.25000	0.34190(38)	0.273(112)	0.125

---

## **Supplementary Note 1: DFT+DMFT calculations for the spin excitations in $\text{Li}_{0.8}\text{Fe}_{0.2}\text{ODFeSe}$**

We use a combination of density functional theory (DFT) and dynamical mean field theory (DMFT), so called DFT+DMFT<sup>1</sup> as implemented in ref. 2 to compute the electronic structure and spin dynamics of this compound. The DFT part is based on the full-potential linear augmented plane wave method implemented in Wien2K<sup>3</sup> in conjunction with a generalized gradient approximation<sup>4</sup> of the exchange correlation functional. In the DFT+DMFT calculations, the electronic charge was computed self-consistently on DFT+DMFT density matrix. The quantum impurity problem was solved by the continuous time quantum Monte Carlo (CTQMC) method<sup>5,6</sup>, using Slater form of the Coulomb repulsion in its fully rotational invariant form. In consistent with previous publication<sup>7,8</sup>, We use a Hubbard  $U=5.0$  eV and Hund's rule coupling  $J=0.8$  eV, and experimentally determined crystal structure including the internal positions of the atoms as shown in Supplementary Table 1. The bare susceptibility was computed using the fully self-consistent DFT+DMFT lattice Green's function and the spin susceptibility was computed using the Bethe-Salpeter equation that takes into account two-particle vertex correction. Here the two-particle (particle-hole) irreducible vertex is local within DMFT and it is equal to the impurity vertex, which can be obtained from the solution of the quantum impurity model using CTQMC. Further computational details on spin susceptibility are available in ref. 8.

## **Supplementary Note 2: Characterization of $\text{Li}_{0.8}\text{Fe}_{0.2}\text{ODFeSe}$ single crystals**

$\text{Li}_{0.8}\text{Fe}_{0.2}\text{ODFeSe}$  single crystals were grown using a hydrothermal method similar to that described in ref. 9. Magnetic susceptibility and resistivity measurements conducted on a crystal from the same batch as those measured with neutrons showed a sharp superconducting transition at 41 K (Supplementary Fig. 3a, b). Powder X-ray diffraction refinements on ground single crystals confirmed a pure tetragonal phase with no detectable impurities. The refined structure parameters are summarized in Supplementary Table 1, which are consistent with previous reports<sup>10</sup>.

## **Supplementary Note 3: Inelastic neutron scattering experiments**

Inelastic neutron scattering experiments were carried out on the PUMA thermal neutron triple-axis spectrometer at Heinz Maier-Lerbnitz Zentrum (MLZ), TU München, Germany, and the ARCS time-of-flight chopper spectrometer at the Spallation Neutron Source of Oak Ridge National Laboratory, USA. For the measurements on PUMA (Fig. 1a, 1d, 1g and 1b), we used the pyrolytic graphite

[PG(002)] as the monochromator and analyzer. The monochromator was double focused. A PG filter was installed in front of the analyzer to eliminate higher order neutrons. For the measurements on ARCS (Fig. 1c, 1e, 1f, 1h, Fig. 2-4), incident energies of  $E_i = 191.6$  and  $49.6$  meV were used. The color plots of the TOF data were visualized using the MSLICE program<sup>11</sup> in which data were smoothed by repeated normalized convolution with a 3x3 matrix  $[0.1 \ 0.2 \ 0.1; 0.2 \ 0.8 \ 0.2; 0.1 \ 0.2 \ 0.1]$ .

#### **Supplementary Note 4: Background subtraction for TOF data**

Strong phonon background can be seen at high  $|\mathbf{Q}|$  in the raw constant-energy images at low energies (Supplementary Figure 4a-e). Nevertheless, the rotation of the scattering pattern and twisted dispersion of the spin excitations can be clearly seen even in the raw data (Supplementary Figure 4a,d). The  $|\mathbf{Q}|$ -dependent background was subtracted for the data in Fig. 2a-e following the practice of ref. 12. Magnetic signals symmetrically surrounding  $(0.5, 0.5)$  can be seen more clearly in the background-subtracted image (Fig. 2a-e). Raw data were presented at high energies when phonon excitations are weak (Fig. 2f-j).

#### **Supplementary Note 5: Additional low energy data**

Previous studies have suggested the presence of a weak magnetic order (ferromagnetic or antiferromagnetic) in  $\text{Li}_{0.8}\text{Fe}_{0.2}\text{OHFeSe}$ , which is likely related to the  $\text{Li}_{0.8}\text{Fe}_{0.2}\text{OH}$  layer<sup>10,13,14</sup>. However, our data reveal no clear evidence of dispersive spin wave excitations associated with a static magnetic order. Supplementary Figure 5 illustrates the low energy excitation spectrum at 5 K in  $\text{Li}_{0.8}\text{Fe}_{0.2}\text{ODFeSe}$ . In addition to the incommensurate spin excitations near  $(0.5, 0.5 \pm \delta)$ , indication of very weak excitations near  $(0.5, 0)$  was also observed at low energies (marked by arrows in Supplementary Figure 5a,b), which was no longer discernible at 45 meV (Supplementary Figure 5c). It is currently unclear whether these low energy excitations are related to the  $\text{Li}_{0.8}\text{Fe}_{0.2}\text{OD}$  layer or FeSe layer, or they are non-magnetic. Further measurements are required to elucidate the nature of these excitations.

#### **Supplementary References**

<sup>1</sup> Kotliar, G. *et al.* Electronic structure calculations with dynamical mean-field theory. *Rev. Mod. Phys.* **78**, 865-951 (2006).

<sup>2</sup> Haule, K., Yee, C.-H. & Kim, K. Dynamical mean-field theory within the full-potential methods: electronic structure of  $\text{CeIrIn}_5$ ,  $\text{CeCoIn}_5$ , and  $\text{CeRhIn}_5$ . *Phys. Rev. B* **81**, 195107 (2010).

- <sup>3</sup> Blaha, P., Schwarz, K., Madsen, G. K. H., Kvasnicka, D. & Luitz, J. WIEN2k, an augmented plane wave + local orbitals program for calculating crystal properties, Techn. Universität Wien, Austria (2001).
- <sup>4</sup> Perdew, J. P., Burke, K. & Ernzerhof, M. Generalized Gradient Approximation Made Simple. *Phys. Rev. Lett.* **77**, 3865-3868 (1996).
- <sup>5</sup> Haule, K. Quantum Monte Carlo impurity solver for cluster dynamical mean-field theory and electronic structure calculations with adjustable cluster base. *Phys. Rev. B* **75**, 155113 (2007).
- <sup>6</sup> Werner, P., Comanac, A., de Medici, L., Troyer, M. & Millis, A. J. Continuous-Time Solver for Quantum Impurity Models. *Phys. Rev. Lett.* **97**, 076405 (2006).
- <sup>7</sup> Yin, Z. P., Haule, K., & Kotliar, G. Kinetic frustration and the nature of the magnetic and paramagnetic states in iron pnictides and iron chalcogenides. *Nat. Mater.* **10**, 932-935 (2011).
- <sup>8</sup> Yin, Z. P., Haule, K., & Kotliar, G. Spin dynamics and orbital-antiphase pairing symmetry in iron-based superconductors. *Nat. Phys.* **10**, 845-850 (2014).
- <sup>9</sup> Dong, X. L. *et al.* (Li<sub>0.84</sub>Fe<sub>0.16</sub>)OHFe<sub>0.98</sub>Se superconductor: Ion-exchange synthesis of large single-crystal and highly two-dimensional electron properties. *Phys. Rev. B*, **92**, 064515 (2015).
- <sup>10</sup> Lu, X. F. *et al.* Coexistence of superconductivity and antiferromagnetism in (Li<sub>0.8</sub>Fe<sub>0.2</sub>)OHFeSe. *Nat. Mater.* **14**, 325-329 (2015).
- <sup>11</sup> R. Coldea, computer code MSLICE, a data analysis program for time-of-flight technique neutron spectrometers (2004).
- <sup>12</sup> Wang, Q. *et al.* Magnetic ground state of FeSe. *Nat. Commun.* **7**, 12182 (2016).
- <sup>13</sup> Pachmayr, U. *et al.*, Coexistence of 3d-Ferromagnetism and superconductivity in [(Li<sub>1-x</sub>Fe<sub>x</sub>)OH](Fe<sub>1-y</sub>Li<sub>y</sub>)Se. *Angew. Chem., Int. Ed.* **54**, 293-297 (2015).
- <sup>14</sup> Lynn, J. W. *et al.* Neutron investigation of the magnetic scattering in an iron-based ferromagnetic superconductor. *Phys. Rev. B* **92**, 060510(R) (2015).